

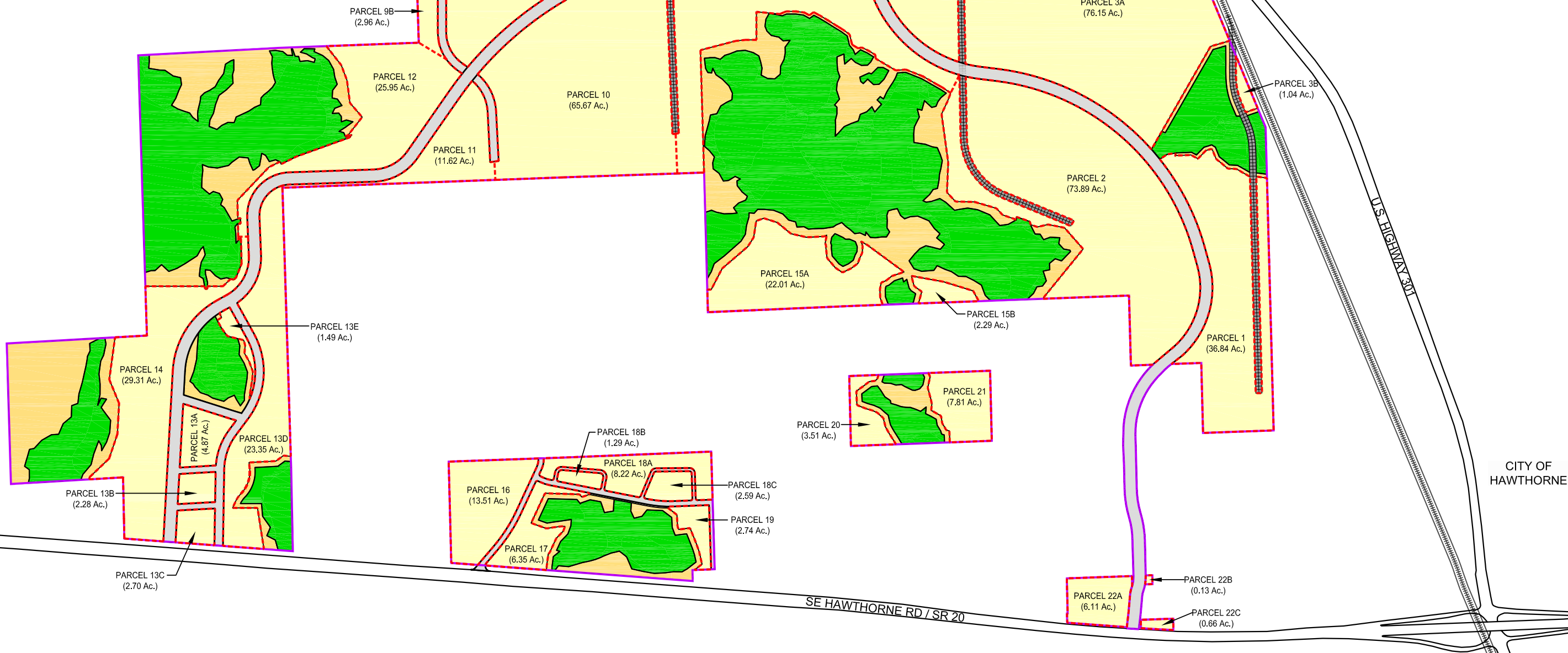
LEGEND

- EXISTING RAILROAD
- PROPOSED RAILROAD
- PROPOSED ROAD
- PLANNED UNIT DEVELOPMENT (PUD) BOUNDARY
- DEVELOPMENT AREA PARCEL BOUNDARY
- AREA OF DEVELOPMENT (621.01 Ac.)
- WETLANDS PRESERVATION / ENHANCED WETLANDS
- UPLAND PRESERVATION/RESTORATION

0 250 500 1000 FT
APPROX SCALE

TEMPORARY NOTES FOR WEYERHAEUSER REVIEW:

1. PRIMARY ROAD CONNECTION TO STATE ROAD 20 REVISED BASED ON CHW ROAD DESIGN DRAWINGS. PREVIOUS DRAWINGS HAVE SHOWN A BREAK IN THE ACCESS ROAD AND NO CONNECTION TO SR 20.



CLIENT NAME	
REVISIONS	
REV. No.	

DESIGNED	DATE	CHECKED	DATE
DRAWN	SEPT 21, 2018	BY	
MM		MM	
DD		DD	
Job No. 16-6261-03		Scale: AS NOTED	

**DEVELOPMENT PARCELS WITH ROADS
CONCEPTUAL MARKETING PLAN
PRELIMINARY - SUBJECT TO CHANGE**

WATER & AIR RESEARCH, Inc.
6821 SW Archer Road
Gainesville, Florida 32608
(352) 372-1500
Certificate of Authorization #956

DRAWING NUMBER	
SHEET: OF	

Weyerhaeuser
HAWTHORNE INDUSTRY PARK
A Weyerhaeuser Industrial Community
CITY OF HAWTHORNE, FLORIDA
Incorporated 1955